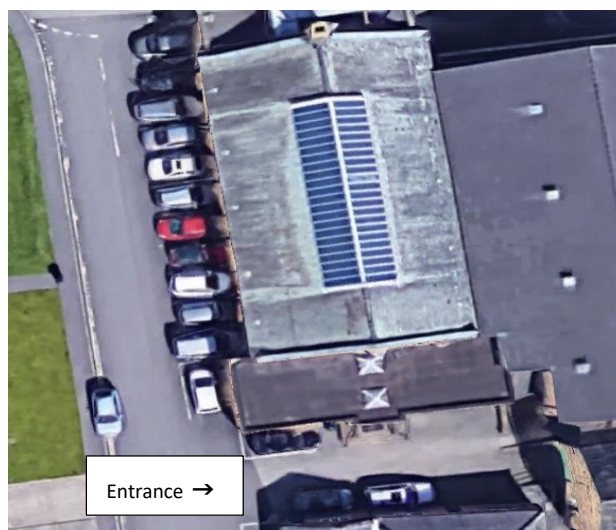


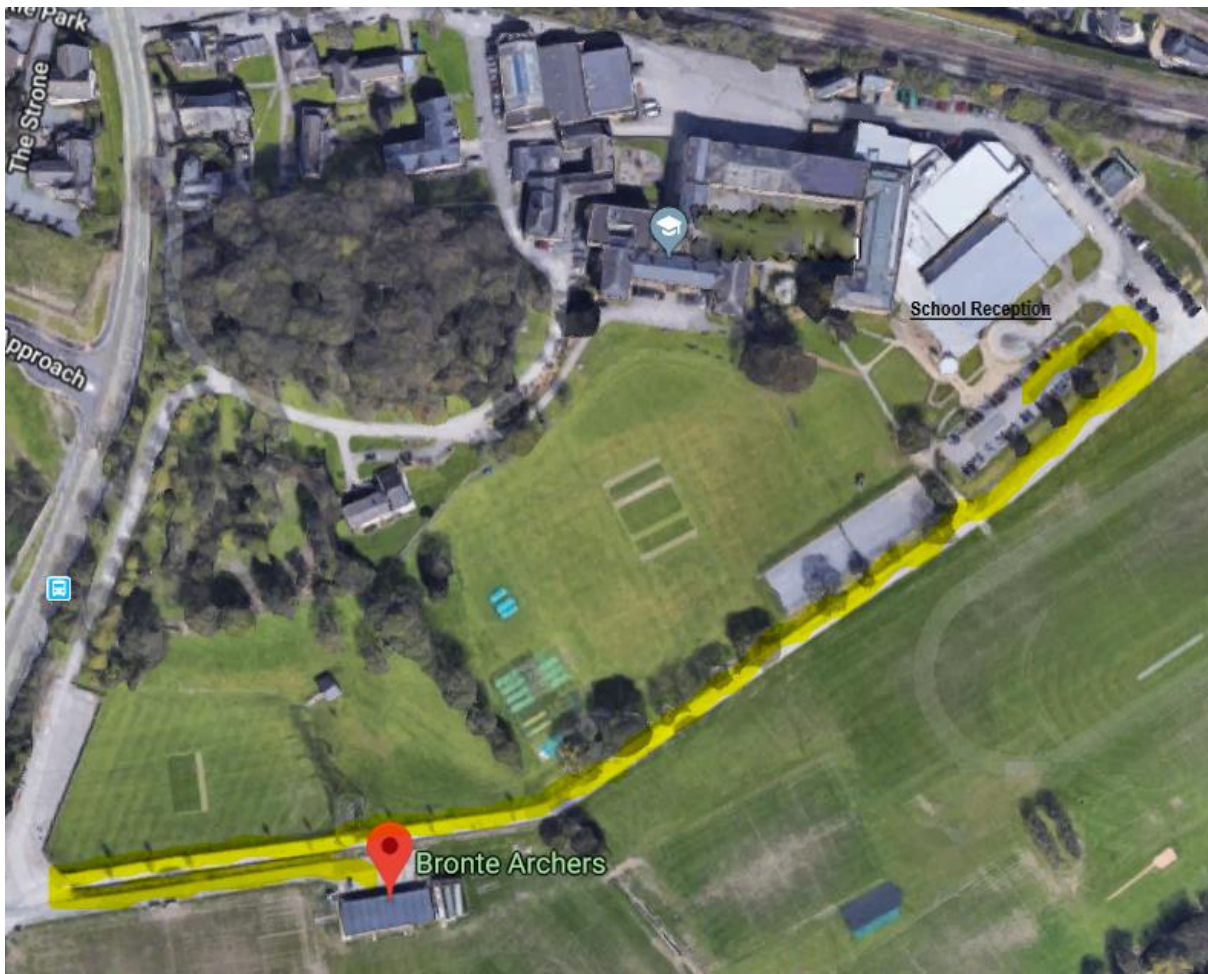


**Directions to Morton Hall: Follow the direction line shown in pic above**

Immediately after turning into the school from the main road, turn left into the car-park, ahead you will see an opening, go through and continue driving (watch out for the speed bumps!) at the top, bear right and follow the road, you will pass the Caretakers House on your right, keep following the road which bears left then right. You will see Morton Hall on your right, there are car parking spaces to the side wall of the Hall. Walk around to the front between the buildings and you will see the entrance. See Pic below



**Directions to School Reception**



**From the Pavilion Clubhouse follow the yellow line in the above picture.**

**Park in the carpark and walk up the steps and through the glass doors.**